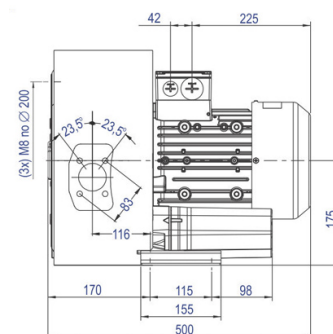
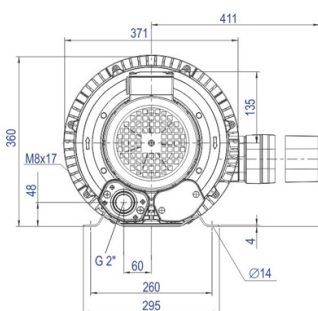
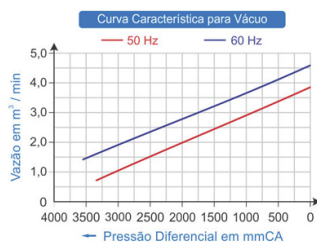
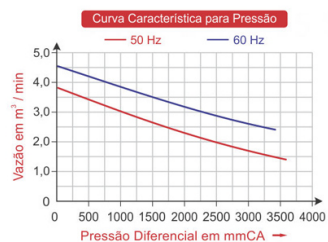


## 2CBR 520 46 DT

Código: 020.520

**COMPRESSOR RADIAL  
DUPLO ESTÁGIO  
MOTOR TRIFÁSICO**



<b>TIPO</b>	Duplo Estágio
<b>MOTOR ELÉTRICO</b>	3,45kW, 4,63cv, Trifásico, 220-290D/380-500Y Volts, 10,8/6,2 Ampéres, 50 / 60 Hz
<b>VÁCUO MÁX.</b>	3.600 mmCA
<b>PRESSÃO MÁX.</b>	3.400 mmCA
<b>VAZÃO MÁX.</b>	4,58 m <sup>3</sup> /min
<b>PRESSÃO SONORA</b>	74 dB(a)
<b>PESO LÍQUIDO</b>	40,0 kg